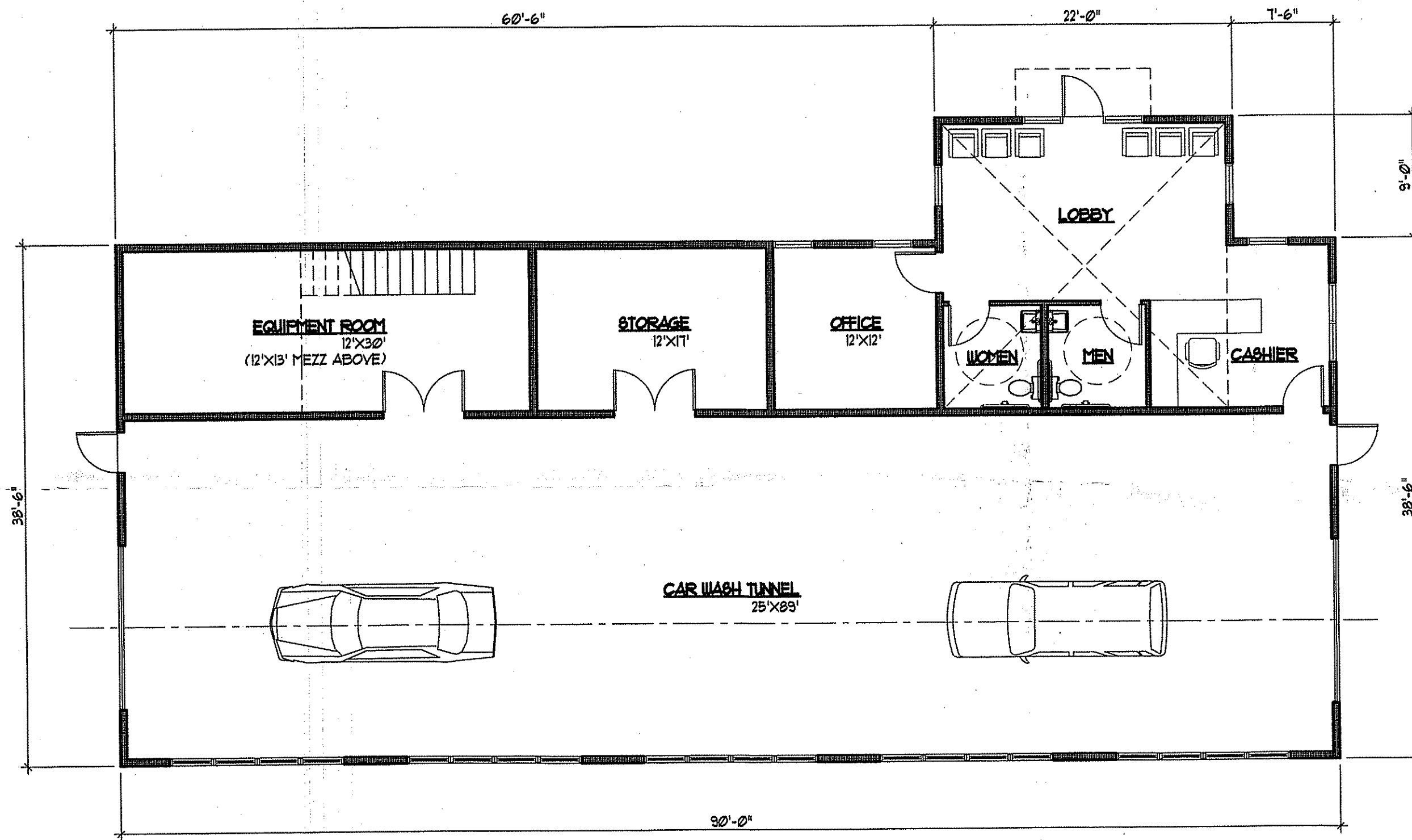


5 WEST ELEVATION

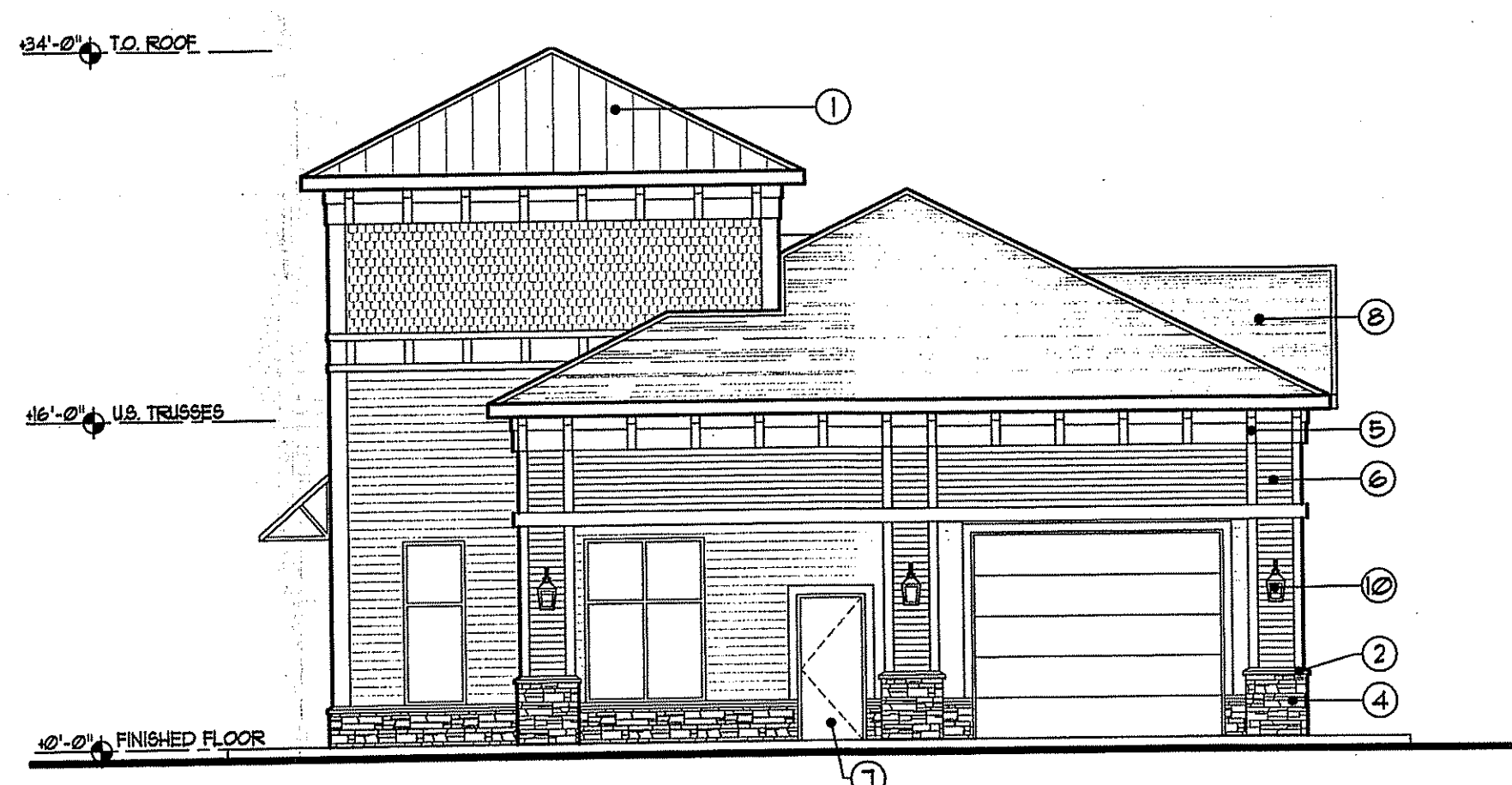


4 NORTH ELEVATION
 1/8" = 1'-0"

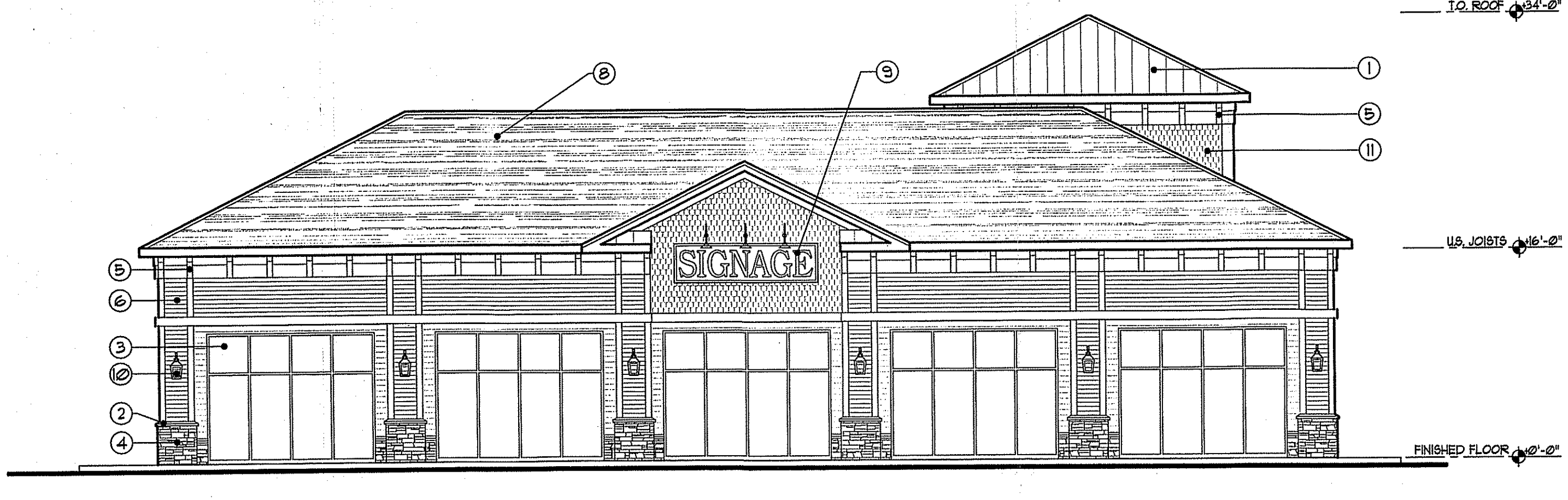
FINISH KEY LEGEND	
①	STANDING SEAM METAL ROOF COLOR AND STYLE TBD
②	PRECAST WATER TABLE ANCHOR CONCRETE ROCKFACE - COLOR TO COORDINATE WITH FAUX STONE
③	STOREFRONT GLASS ANODIZED ALUMINUM TO MATCH EXISTING
④	FAUX STONE VENEER COLOR AND STYLE TBD
⑤	MOULDINGS - EXTRUDED SHAPES POLYSTYRENE CORE W/ REIN. FIBERGLASS FINISH IN SHAPES AS TO BE DETAILED
⑥	HORIZONTAL SIDING COLOR AND STYLE TBD
⑦	HOLLOW METAL EXIT DOOR PAINT TO COMPLEMENT FACADE COLOR
⑧	DIMENSIONAL ROOF SHINGLES COLOR AND STYLE TBD
⑨	NON-INTERNALLY ILLUMINATED SIGNAGE WITH GOOSENECK LED LIGHTING
⑩	DECORATIVE SCONES LED WALL WASHER FIXTURES
⑪	FAUX CEDAR SHAKES COLOR AND STYLE TBD



3 FLOOR PLAN
 1/8" = 1'-0"



2 SOUTH ELEVATION
 1/8" = 1'-0"



1 EAST ELEVATION
 1/8" = 1'-0"

NEW CAR WASH BUILDING FOR:
MARLBORO MALL
 8 SOUTH MAIN STREET
 MARLBORO TOWNSHIP, NEW JERSEY
 LOTS: 2 & 3 BLOCK: 351

Signature
 Ricardo Perez, AIA
 NY 03274-51 MA 30776
 Stephen L. Radosti, AIA
 NJ 13369 FL 93270

Perez + Radosti
 associates, p.c.
 Architecture
 Interior Design
 P+Ra
 www.pra.com
 379 Princeton Hightstown Rd. Suite 308, Cranbury, NJ 08512 Tel. 609.443.4031 Fax 609.443.5277

DRAWING TITLE
 CONCEPTUAL DRAWINGS
 SHEET NUMBER
SK-5
 OF